



**M**  
MADAMFO  
GHANA

# CHILDREN'S SHELTER HO

A HOME FULL OF SAFETY  
AND OPPORTUNITY



**M** MADAMFO  
GHANA  
FOUNDATION

**M** MADAMFO  
GHANA  
FOUNDATION

**M** MADAMFO  
GHANA  
FOUNDATION



TOGETHER FOR  
A SUSTAINABLE FUTURE.

# »MADAMFO GHANA«

FRIENDSHIP THAT CREATES CHANGE

MADAMFO  
GHANA  
FOUNDATION

# FRIENDSHIP THAT MAKES A DIFFERENCE

“Madamfo” means friend – and that is exactly who we are to the people of Ghana. Through our projects, we create real and lasting change: sustainable, collaborative, and grounded in mutual respect.

**Our mission:** sustainable development through local ownership – for a better future.

Behind Madamfo Ghana is a dedicated team with deep knowledge of the local language, culture, and challenges. Founded by Bettina Landgrafe, our work has been shaped and carried forward for nearly 25 years by experienced Ghanaian team members such as Victor Manu and Enock Sunday.





**Our principle:** sustainability in every project.

Respect for people and nature, transparency toward our supporters, and a strong local network are the foundation of our success. Together, we build the future.

**Our goal:** projects that can one day continue without us – because they are fully owned and sustained by the people themselves.





# HOPE FOR THE CHILDREN AT LAKE VOLTA

The Children's Shelter Ho is a child protection facility certified by the Ghanaian government and operated by Madamfo Ghana. It meets the highest international standards as defined by the UN Convention on the Rights of the Child.

We take in children who have been victims of human trafficking, exploitation, or violence. Our goal is to provide them with a stable, loving environment where they can heal, learn, and grow.

From balanced nutrition and comprehensive medical care to the daily dedication of our caregivers, we ensure that every child is fully supported.

LEARN MORE ABOUT THE  
CHILDREN'S SHELTER HO: 









# THE CHILDREN'S SHELTER HO – PROTECTION INSTEAD OF EXPLOITATION

Around Lake Volta, countless children are victims of exploitation. Many come from extremely poor families, sometimes from neighboring countries, and are given away by relatives in the hope of a “better life.”

They often end up with fishermen who force them to work under harsh conditions: starting early in the morning, barefoot, without protection, and frequently without enough food. They haul nets, fish, row and clean boats, and carry heavy loads. School, childhood, and a sense of safety are far out of reach.

Authorities and partner organizations regularly succeed in rescuing children, but what happens next?

WATCH THE DOCUMENTARY:



Watch the moving Stern TV documentary about our work with children affected by child trafficking at Lake Volta.

# A SAFE PLACE OF REFUGE

Our Children's Shelter Ho offers a new beginning to children affected by trafficking at Lake Volta. A safe, stable and caring environment. In small, family-like groups, we can accommodate up to 90 children between the ages of 1 and 17.

What we provide goes far beyond a roof over their heads:

## SLEEPING & LIVING

Each child has their own bed – often for the first time in their life – personal space, and access to shared living and play areas.

## NUTRITION & HYGIENE

Balanced meals with vegetables and grains from our own farm, clean drinking water, hygiene products, and fresh clothing are a given.

## EDUCATION & CARE

Children attend nearby schools, receive tutoring and individual learning support. All school materials are provided.

## DAILY LIFE & STRUCTURE

A clear daily routine with regular mealtimes, study hours, playtime, and rest – essential for children who have never experienced stability.

**MORE INFORMATION ABOUT  
THE CHILDREN'S SHELTER HO:**







# INFRASTRUCTURE

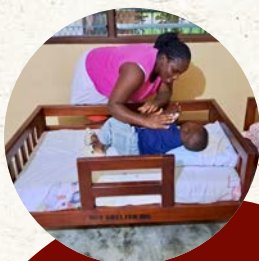
## LIBRARY AND COMMON ROOM

A space for learning,  
recreation,  
and quiet moments.



## DORMITORIES AND CAREGIVER HOUSING

Located in the main building,  
lively and supervised  
around the clock.



## FIRST AID STATION AND EMERGENCY INTAKE

A safe place for newly  
rescued children to receive  
immediate care until next steps  
are determined.



## ADMINISTRATION AND OFFICES

Planning, coordination,  
and documentation  
come together here.

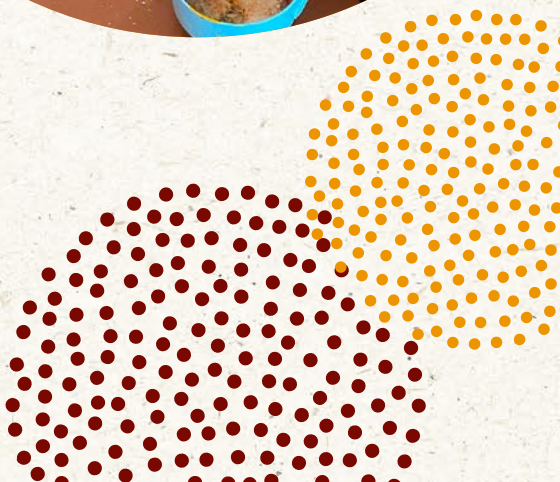
## KITCHEN, DINING HALL AND STORAGE

Meals are prepared daily  
for everyone; supplies are  
stored and distributed here.



## PLAYGROUND AND BVB FOOTBALL FIELD

Especially on weekends,  
this is where the action is.



# DAILY LIFE

## 1. ADMISSION AND INITIAL CARE

- Children are usually referred by police, social services, or partner organizations
- Intensive initial phase with medical care, psychological stabilization, and social support

## 2. MEDICAL CARE

- Close cooperation with local health facilities
- Regular health checks and vaccinations
- Access to the best possible care
- Full coverage of emergency costs
- Psychosocial support and trauma counseling

## 3. REINTEGRATION OR LONG-TERM CARE

- Reintegration into families of origin or foster families
- Alternatively: long-term support and care







#### 4. SCHOOLING AND TUTORING

- Attendance at regular external schools with all costs covered
- Tutoring to close learning gaps
- Goal: individual support and strong future prospects
- Pathways to vocational training or university

#### 5. DIVERSE LEISURE ACTIVITIES

- Sports and games
- Reading programs and computer courses
- Personal development workshops
- Regular celebrations and excursions
- Project weeks
- Music and art programs

# ROOM TO GROW

We have a soccer field sponsored by the BVB Foundation “leuchte auf” and a large playground for younger children. On weekends, we offer a wide range of activities such as sports, dance, and French classes. Our in-house library invites children to linger, and an IT room is available for studying and homework.

This level of care requires patience, expertise, and reliable support. By becoming a sponsor, you accompany a child over the long term and help change life paths sustainably. With just € 50 a month, you give hope, perspective, and a piece of childhood back.

LEARN MORE ABOUT OUR  
SPONSORSHIP:









**NO RELIABLE ACCESS  
TO TAP WATER**



**FREQUENT  
POWER OUTAGES**



**LOW  
ENVIRONMENTAL  
AWARENESS**



# CURRENT CHALLENGES

After 15 years of intensive use, many buildings are showing their age. Roofs in particular are heavily affected by tropical heat and rainfall, with leaks and structural damage in several areas. At the same time, the public power supply is extremely unstable. Daily outages affect critical areas such as the kitchen, medication storage, and evening study time.

A reliable energy supply is essential for a safe home. After more than a decade of operation, we have reached a point where we must rethink and move forward. These challenges threaten children's well-being – but they also present an opportunity.

By investing in renewable energy, water treatment, and waste reduction, the children's home can become a model for sustainable development.



WEAK  
RECYCLING  
STRUCTURES





## VISION AND NEXT STEPS – ON THE PATH TO A BEACON PROJECT

Our goal is to develop the Children's Shelter Ho into a flagship project for ecological sustainability, reliable infrastructure, and community well-being – showing how child protection and environmental responsibility go hand in hand.

We are investing in solar energy for stable power, plastic-free processes, and upgrading the water system to drinking-water quality. A greenhouse and farm project strengthens food security and creates new learning opportunities. Environmental education for children and the surrounding community ensures that sustainability is understood and carried forward.

The result is a scalable model that protects children, safeguards the environment, and addresses the challenges of the Volta region – fully aligned with the UN Sustainable Development Goals.

**DONATE  
NOW**



## OUR GOALS:

- Transition from conventional to solar energy
- Introduce plastic-free processes
- Upgrade water infrastructure to safe drinking water
- Build a greenhouse and expand the farm project
- Environmental education for children and the community



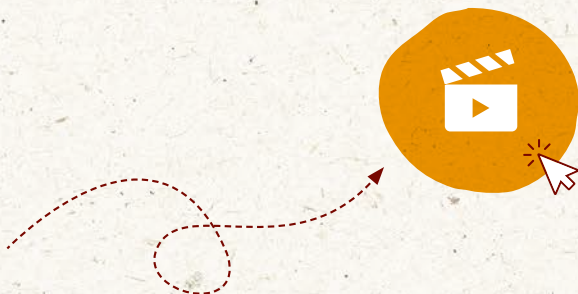
# GROWING HOPE – SUSTAINABLE FARMING, FRESH VEGETABLES FOR THE CHILDREN'S SHELTER

To secure long-term nutrition for the children, we plan to install a modern greenhouse. This ensures regular access to fresh vegetables, lowers food costs, and generates additional income through the sale of surplus produce.

The greenhouse complements our existing tilapia fish farm and can be further developed into an innovative aquaponics system that combines fish farming and vegetable production. This approach delivers healthy meals, financial relief, and a scalable model for sustainable agriculture that can be replicated in other communities.

This is a step toward greater food security, educational opportunities, and environmental responsibility.


WATCH THE  
PROJECT FILM:







# PROJECT GOALS



A SUSTAINABLE  
MODEL PROJECT –  
ADAPTABLE TO OTHER  
INSTITUTIONS IN GHANA

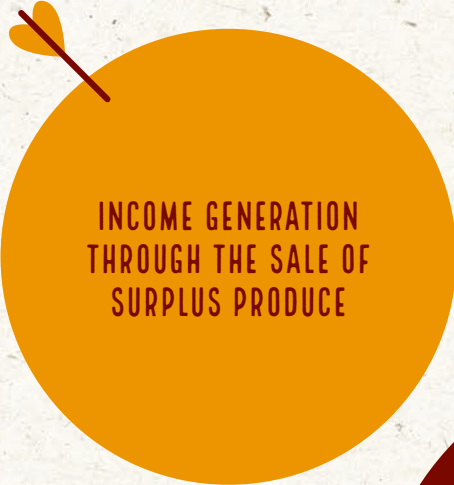


PRACTICAL  
SKILLS TRAINING  
IN SUSTAINABLE  
AGRICULTURE





**YEAR-ROUND SUPPLY  
OF FRESH VEGETABLES  
FOR THE CHILDREN**



**INCOME GENERATION  
THROUGH THE SALE OF  
SURPLUS PRODUCE**



**REDUCED FOOD EXPENSES  
AND LESS DEPENDENCE  
ON LEASED FARMLAND**



## EMPOWERING FUTURE – TOGETHER

At the Children's Shelter Ho, we provide children with safety, care, education and the opportunity for a self-determined life. It is a home they never had – a place full of hope, learning, and laughter. With your support, every individual story can grow into one of courage, strength, and future.







MADAMFO GHANA E.V.  
VOERDER STRASSE 139A  
58135 HAGEN  
TELEFON: 0049 (0) 2331 1278 278  
MAIL@MADAMFO-GHANA.DE  
WWW.MADAMFO-GHANA.DE

 [FACEBOOK.COM/MADAMFO.GHANA](https://www.facebook.com/madamfo.ghana)  
 [INSTAGRAM.COM/MADAMFO\\_GHANA](https://www.instagram.com/madamfo_ghana)